

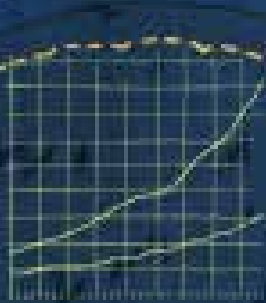
think: big



"I know who I WAS when I woke up this morning, but I think I must have been changed several times since then."

(POPE JOHN)

DISCUSSION OF SCIENTIFIC METHOD (1851)



$$\int_a^b f(x) dx = F(b) - F(a)$$





Case Western
Reserve
University.
We think big.
Do you?

We will prepare you
for your biggest,
brightest future.

Stuff that's BIG here:

Innovation

We have a big appetite for original ideas. CWRU's 100+ centers and institutes buzz with people imagining—and creating—the future.

Outstanding facilities

Big talent deserves the best: Our campus is home to the largest open-access innovation space in the country (Sears think[box]). This year, we opened a 485,000-square-foot Health Education Campus with Cleveland Clinic to promote collaborative learning among nurses, dentists, doctors and other health care professionals.

Work opps (internships, co-ops and real jobs)

Our relationships with organizations coast-to-coast (and around the globe) create a big network. Plenty of chances to get real experience where you want it. Last summer, 65 percent of CWRU interns received, or expected to receive, a full-time job offer as a result of an internship.

Research (is REALLY BIG here)

Students of all disciplines and years join research teams seeking new knowledge. Research funding is MASSIVE at \$330+ million. Eighty-three percent of undergrads participate in research.

1,300+ hrs (hands-on)

Vast practical experience gives CWRU nurses a big advantage.

Drama (the good kind)

Talent showcase, big time — more than 50 performing arts groups on campus want you.

Nobel laureates (galore)

A big list that just keeps growing: In 2017, Richard H. Thaler became our 16th Nobel Prize recipient, earning the award in economic sciences.

Travel abroad

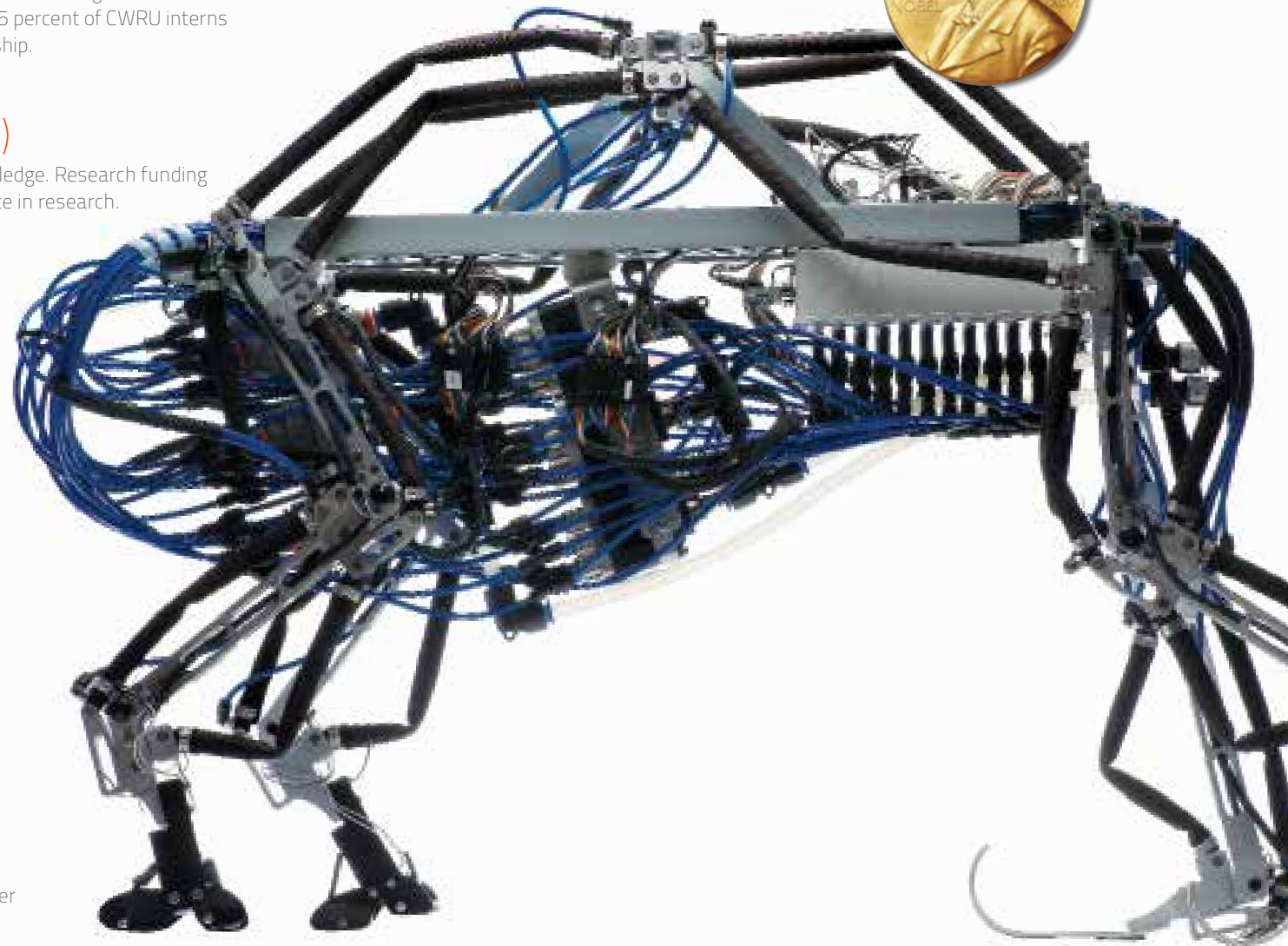
It's a big world. CWRU undergrads study abroad on six continents.

Generosity

Giving back is big: Last year, our students gave nearly half a million volunteer hours in Cleveland, across America and around the world.

and, location, location, location

No other school on the planet has all that we can offer you. Really. More later...



Preparation

for life is the overarching mission here (and we're very good at it).

In addition to a top-tier education, you'll graduate with advantageous (real-life) skill sets* firmly in place.

*and we don't mean doing the laundry

We mean preparation for LIFE with all its multi-faceted complexity of decisions and responsibilities. A CWRU education prepares you for a brilliant future of meaningful achievement. On-campus resources such as career fairs, the undergraduate research office, career services, your navigator, and myriad others open doors to real-world work experiences, during school and upon graduation.

And come Commencement weekend, you will realize that you've also acquired unexpected layers of knowledge and confidence. We make it our business to add professionalism and city-smarts to your education—an *edge* that makes the BIG difference to potential employers and graduate programs.

WITHIN 3 MONTHS OF GRADUATION:

94%

OF RECENT GRADS ARE WORKING GREAT JOBS, ENROLLED IN TOP GRADUATE PROGRAMS OR PURSUING PERSONAL GOALS SUCH AS SERVICE TO OTHERS AND TRAVEL

81%

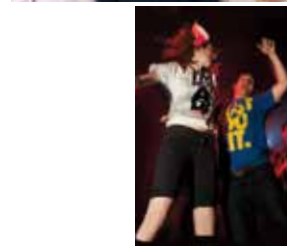
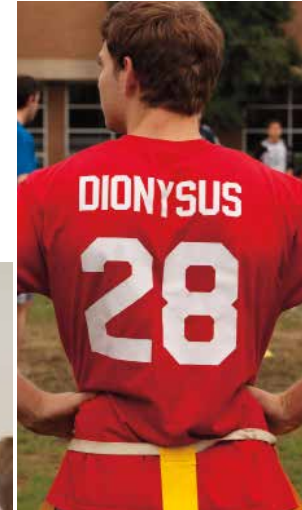
OF THOSE FIRST JOBS ARE IN THEIR FIELDS OF STUDY

\$55K-\$60K*

SALARIES ENABLE GRADS TO RETURN THAT "EMERGENCY" VISA CARD TO THE FOLKS

*median starting salary range for a 2018 CWRU grad

widest social network of your life.



Join

an epic community of engineers and entrepreneurs, scientists and sci-fi fans, artists and archaeologists, nurses and networkers—our students and professors are from all over the world, and their interests are all over the map. But they do share certain common characteristics: They are unabashedly smart; they have incredible passion and focus; they thrive on challenge; they're hungry for new knowledge, self-knowledge and life-expanding experiences. They expect big things from their college years, and they expect big things from themselves. If this sounds familiar, you belong here, big-time.



Four undergraduate colleges offering nearly 100 programs of study, plus the freedom to customize your learning across the four.

College of Arts and Sciences

Our largest college brings together scholarship, research and creative endeavors in the arts, sciences and mathematics, social sciences and humanities. We offer more than 60 major and minor programs in 22 academic departments for an incredible range of studies.

Case School of Engineering

For more than 125 years, the Case School of Engineering has engaged in world-renowned teaching and research. Today, with 17 academic programs and 13 high-tech centers and institutes, we are taking engineering education to a new level.

Weatherhead School of Management

Weatherhead's innovative vision for business education builds on four components: early access to business courses; extensive co-op and internship experience; emphasis on analytical skills; and effective communication of ideas.

Frances Payne Bolton School of Nursing

One of America's best, our nursing school emphasizes rigorous academics and extensive clinical experience in premier medical organizations such as University Hospitals and Cleveland Clinic. Our nurses are the future leaders in the fields of clinical care, research, public policy and health education.

CWRU at-a-glance

PROGRAMS OF STUDY

Through its three undergraduate schools and one college, Case Western Reserve offers the following academic programs:

Accounting	Electronics	Natural Sciences
Aerospace Engineering	Engineering Physics	Nursing
African and African American Studies	English	Nutrition
Anthropology	Entrepreneurial Studies	Nutritional Biochemistry and Metabolism
Applied Data Science	Environmental Geology	Origins Sciences
Applied Mathematics	Environmental Nutrition	Philosophy
Art Education	Environmental Studies	Physics
Art History	Ethics	Political Science
Art Studio	Ethnic Studies	Polymer Science and Engineering
Artificial Intelligence	Evolutionary Biology	Pre-Architecture
Asian Studies	Film	Pre-Dental Medicine
Astronomy	Finance	Pre-Law
Biochemistry	French	Pre-Medicine
Bioethics and Medical Humanities	French and Francophone Studies	Psychology
Biology	General Engineering	Public Health
Biomedical Engineering	Geological Sciences	Public Policy
Business Management	German	Religious Studies
Chemical Biology	Gerontological Studies	Russian
Chemical Engineering	History	Social Justice
Chemistry	History and Philosophy of Science	Social Work
Childhood Studies	International Studies	Sociology
Chinese	Italian	Spanish
Civil Engineering	Japanese Studies	Sports Medicine
Classics	Judaic Studies	Sports Nutrition
Cognitive Science	Leadership	Statistics
Communication for Health Professionals	Marketing	Systems and Control Engineering
Computer Engineering and Engineering	Materials Science	Systems Biology
Computer Gaming	and Engineering	Teacher Education
Computer Science	Mathematics	Theater
Creative Writing	Mathematics and Physics	Women's and Gender Studies
Dance	Mechanical Design and Manufacturing	World Literature
Data Science and Analytics	Mechanical Engineering	
Economics	Mechanical Engineering	
Electrical Engineering	Music	
	Music Education	

Many minors and concentrations are available.
case.edu/admission/academics

CWRU IN BRIEF

Case Western Reserve University is a research-intensive university, one of only 26 private institutions in the prestigious AAU. We prepare ambitious, curious students for career, grad school and life. We offer an experience-based undergraduate education, as well as graduate education, in the arts and sciences, engineering, management and nursing. Graduate programs are also offered in law, medicine, dental medicine and applied social science.

UNDERGRADUATE STUDENT BODY

5,300 students
 Residents of all 50 states and citizens of 87 countries

TESTING, MIDDLE 50%, CLASS ENTERING FALL 2019*

SAT: 1400–1520 composite (1600 total)

ACT: 31–34 composite (superscore)

*Self-reported scores accepted

LOCATION, LOCATION, LOCATION

Cleveland, Ohio. See the centerfold.

11:1 STUDENT: FACULTY

Ensures small classes (59 percent of classes have fewer than 20 students) and plentiful research opportunities

DIII SPORTS

Our 19 Division III teams compete in the UAA and PAC conferences:

Men's	Women's
Baseball	Basketball
Basketball	Cross-Country
Cross-Country	Indoor Track and Field
Football	Outdoor Track and Field
Indoor Track and Field	Soccer
Outdoor Track and Field	Softball
Soccer	Swimming and Diving
Swimming and Diving	Tennis
Tennis	Volleyball
Wrestling	

Case Western Reserve University admits students of any race, religion, age, sex, color, disability, sexual orientation, gender identity or expression, and national or ethnic origin to all the rights and privileges, programs, and activities generally accorded or made available to students at the university. It does not discriminate on the basis of race, religion, age, sex, color, disability, sexual orientation, gender identity or expression, or national or ethnic origin in administering its educational policies, admission policies, employment, promotion and compensation policies, scholarship and loan programs, and athletic or other university-administered programs.

ADMISSION

CWRU looks for students who are intellectually curious, who have demonstrated success in challenging coursework, and who are involved in their communities and in extracurriculars of all kinds. Got a special passion? Tell us about it.

APPLYING TO CWRU

Please submit the Common Application or Coalition Application with CWRU member questions, School Report with counselor recommendations, two teacher recommendations and SAT or ACT test results (self-reported scores accepted).

FIRST-YEAR APPLICANT DEADLINES

Early Action (non-binding) and Early Decision I (binding)	Nov. 1
Pre-Professional Scholars Program	Dec. 1
Regular Decision and Early Decision II (binding)	Jan. 15

TRANSFER & 3/2 ENGINEERING APPLICANT DEADLINES

Fall Semester Early Plan	Mar. 15
Fall Semester Regular Plan	May 1
Spring Semester*	Oct. 1

*Applications received after Oct. 1 will be considered on a space-available basis.

2019–20 TUITION & FEES

Tuition	\$50,450
Housing and meal plan	15,614
Fees	474
Books	1,200
Personal expenses	1,350
Total cost	\$69,663

FINANCIAL AID & SCHOLARSHIPS

Case Western Reserve University meets 100 percent of demonstrated need for all admitted students. The Office of University Financial Aid will determine your eligibility for need-based aid and tailor a package comprising a combination of grants, loans and work-study. All applicants are considered for scholarships; some scholarships require an additional application or audition. Need-based financial aid and scholarships are available to international students. See case.edu/admission for deadlines.

QUESTIONS?

Office of Undergraduate Admission
 PHONE: 216.368.4450 / EMAIL: admission@case.edu
case.edu/admission

Case Western Reserve University | 10900 Euclid Avenue, Cleveland, OH 44106-7049

Ambitious. Creative. Intense.
Unconventional. Focused.
Curious. Quirky. Opinionated.
Generous. Entrepreneurial.
Multi-faceted. Intellectual.

All of the above?! (whoa)

You belong here,
BIG-TIME.